

2014/2015 Catalogue

SMARTWAVE
FOR SMARTER BOATS



Smooth, Safe, Stable, Dry.

www.smartwaveboats.co.nz



SW2400

SW3500

SW4200

SKIPPA

SW4800

Boat Range

SmartWave Mission

Our mission is for your success, all products produced are to be of excellent quality and design right through to delivery. Careful and dedication to service will ensure customer satisfaction and growth while retaining long term relationships.

Customers input and ideas are always welcome as it further enhances the overall product.

SmartWave Profile

SmartWave Boats are the uniquely designed craft that we manufacture in New Zealand giving you the features to make your boating experience a pleasure.

SmartWave Boats are world renowned for their ability to handle the tough and extreme conditions many seas, lakes and rivers contain.

The efficient hull design, the high quality finish and features are the success story SmartWave has proved for over 10 years.

The material used in these hulls is the LMDPE (Linear Medium Density Polyethylene) which is UV stabilised, strong and durable. This makes these boats perfect for diving, tenders, hire, charter work, commercial fishing, recreation and many other challenging opportunities.

Ocean life has many yet unknown qualities and quantities that only the super quiet and stable ride of the SmartWave boat will give you the experience to discover these creations...

Happy Boating.

Safest Boat You Can Own

The survey swamp testing requirements in accordance with AS1799 and CE Standards have been successfully performed which makes SmartWave the perfect boats for hire operations, life craft and commercial operations.

Foaming... Yes, all SmartWave twin skinned hulls have been injected with marine polyurethane foam that makes SmartWave *unsinkable*.



Testing

- 1 10 metre drop test with internal loading of 300kg. Result; no structural damage.
- 2 Hull cut in half - stern still floats.
- 3 Internal loading of 500kg at starboard with list angle of 13°.
- 4 Fully swamped with internal loading of 300kg.
- 5 Bow and stern rail test. Loading of 160kg per rail.





Looking for a tender, row boat something smaller for the kids? Dad and Mum, this is it!

There are many unique features this boat has that no other has.

Safety - exceptionally stable and secure, so fishing in the tight spots or just having fun, this boat will surprise you.

Features

- 3x Seating Positions
- 2x Rowing Positions
- Rod Holders
- Cup Holders
- Life Line
- Bow Cleat
- Tackle Bin
- Centre Storage



Colours



Accessories

- Dinghy Dolly Wheels
- Beach Trolley

Specifications

| | |
|------------------|--------|
| Model | SW2400 |
| Horse Power | 6 |
| Length | 2490mm |
| Beam Exterior | 1340mm |
| Internal Height | 370mm |
| Dead Rise | 11° |
| Hull Weight | 60kg |
| Hull Thickness | 6mm |
| Capacity | 270kg |
| Adults (max) | 2 |
| Transom Capacity | 28kg |



"SW2400 it's virtually **unsinkable**, **indestructible** and **maintenance free**. Years of development has achieved a strong and extremely **robust boat** suitable for even the most demanding user"

- Marine Revolution UK:





The SW3500 is the real success story of the SmartWave family.

Unique hull design allows for a early planning speed. The heavily reversed chines makes this boat unrivalled for stability and safety. With an excess of user friendly features you will be sure to catch more fish and have more fun with less effort.

Features

- 4x Seating Positions
- 1x Rowing Position
- Removable Centre Seat
- L & S Shaft Options
- Bow & Stern Rails
- Rod Holders
- Drink Holders
- Boarding Steps
- Bow Roller
- Bow Tow Cleat
- Under Seat Storage



Models



Open Boat



E-Fish Centre Console

Colours



Accessories

- Boarding Ladder
- Bimini Cover
- SmartWave Trailer

Specifications

| | |
|------------------|------------|
| Model | SW3500 |
| Horse Power | 30 |
| Length | 3500mm |
| Beam Exterior | 1700mm |
| Internal Height | 420mm |
| Dead Rise | 13° |
| Hull Weight | 120kg |
| Hull Thickness | 8 – 9mm |
| Capacity | 480kg |
| Adults (max) | 4 |
| Transom Capacity | 78kg |
| Transom Size | 15/20 inch |



*"I think the SmartWave 3500 has a lot to offer and it could easily double as a **handy fishing boat or useful tender**"*

- Wayne Kampe, QLD Fishing Magazine





The boatie's wants and needs are all met in this 'Perfect for Fishing' SmartWave SW4200.

Wow! You won't beat this boat for stability, safety, dry and smooth riding, even in rough waters. Best of all, it is seriously user friendly. With it's flat internal floor and hidden conduits, all cabling for steering etc is out of way allowing for an excellent safe and clean layout. This means the boat is ideal for the serious fishing guru or the whole family, kids and all.

Features

- 5x Seating Positions
- 5x Storage Compartments
- Centre Seat/Storage
- Bow & Stern Rails
- Rod Holders
- Drink Holders
- Boarding Steps
- Bow Tow Eye
- Flat Floor
- Reinforced Transom
- Rear Floor Drain
- Hidden Cabling Provision



Models



Open Boat



E-Fish Centre Console

Colours



Accessories

- Boarding Ladder
- Bimini Cover
- SmartWave Trailer
- Ski Pole

Specifications

| | |
|------------------|---------|
| Model | SW4200 |
| Horse Power | 50 |
| Length | 4300mm |
| Beam Exterior | 1930mm |
| Internal Height | 580mm |
| Dead Rise | 16.5° |
| Hull Weight | 220kg |
| Hull Thickness | 10mm |
| Capacity | 590kg |
| Adults (max) | 5 |
| Transom Capacity | 105kg |
| Transom Size | 20 inch |



*“Kiwi-made SmartWave SW4200 delivers a **smarter way of fishing** with it’s no-fuss, no worries, super strong, poly-plastic hull”*

- SW4200 Test Report by James Hill
Trailer Boat, September 2014.





This multipurpose designed boat allows you to use the hull and up spec to a Centre Console or Cuddy Cab with relative ease.

That means estuary, sheltered water and off shore boating can be enjoyed with this size boat. With it's generous internal size friends and family can experience the quiet and soft ride while you navigate to that secret spot.

Features

- 5x Seating Positions
- 5x Storage Compartments
- Centre Seat/Storage
- Bow & Stern Rails
- Rod Holders
- Drink Holders
- Boarding Steps
- Bow Tow Eye
- Flat Floor
- Reinforced Transom
- Rear Floor Drain
- Hidden Cabling Provision



Models



Open Boat



E-Fish Centre Console



Cuddy Cab

Colours



Accessories

- Boarding Ladder
- Bimini Cover
- SmartWave Trailer
- Bait Board
- Rocket Launcher
- 60L Fuel Tank

Specifications

| | |
|------------------|-----------|
| Model | SW4800 |
| Horse Power | 60 |
| Length | 4800mm |
| Beam Exterior | 2000mm |
| Internal Height | 580mm |
| Dead Rise | 17° |
| Hull Weight | 340kg |
| Hull Thickness | 10 – 11mm |
| Capacity | 780kg |
| Adults (max) | 5 |
| Transom Capacity | 120kg |
| Transom Size | 20 inch |



*“The SmartWave 4.8 is a **cut above** other polythene boats due to her double skinned hull, moulded in one piece with no joins or welds and then foam filled to provide positive buoyancy to make the craft, in their words, **virtually unsinkable**”*

- UK SW4800 Review





All your boating enjoyment with this user friendly dinghy.

With it's light weight and superb stability, this boat is great for kids, yacht tender and those 'get away from it' situations.

Great to transport as a car topper and easy to store. You will love it!

Features

- 3x Seating Positions
- 1x Rowing Position
- Life Line
- Light Weight
- Bow Cleat
- Removable Seating



Colours



Accessories

- Dinghy Dolly Wheels
- Beach Trolley
- Oar Kit

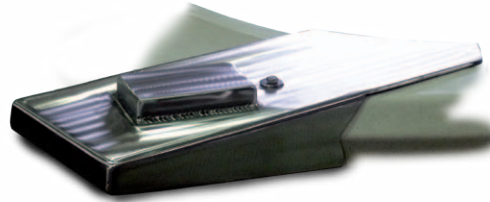
Specifications

| | |
|------------------|--------|
| Model | SKIPPA |
| Horse Power | 4 |
| Length | 2500mm |
| Beam Exterior | 1420mm |
| Internal Height | 440mm |
| Dead Rise | 11° |
| Hull Weight | 49kg |
| Hull Thickness | 6mm |
| Capacity | 250kg |
| Adults (max) | 2 |
| Transom Capacity | 24kg |

Bimini Cover



Trolling Motor Bracket



Rocket Launcher



Boarding Ladder



Ski Pole



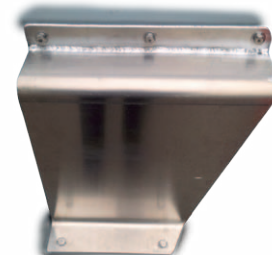
Bait Board



Dingy Dolly Wheels



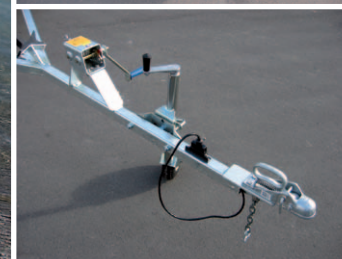
Auxiliary Outboard Sub Bracket



SmartWave Accessories

SmartWave boats are smooth, safe, stable and dry. Why not add some SmartWave accessories to make your experience even more enjoyable.





Trailer

Very important! Your boat is your valuable possession and must be carried with care.

The correct trailer configuration is absolutely important, so you get that optimum performance once on the water.

Any trailer used to support SmartWave must match the following checklist.

Checklist

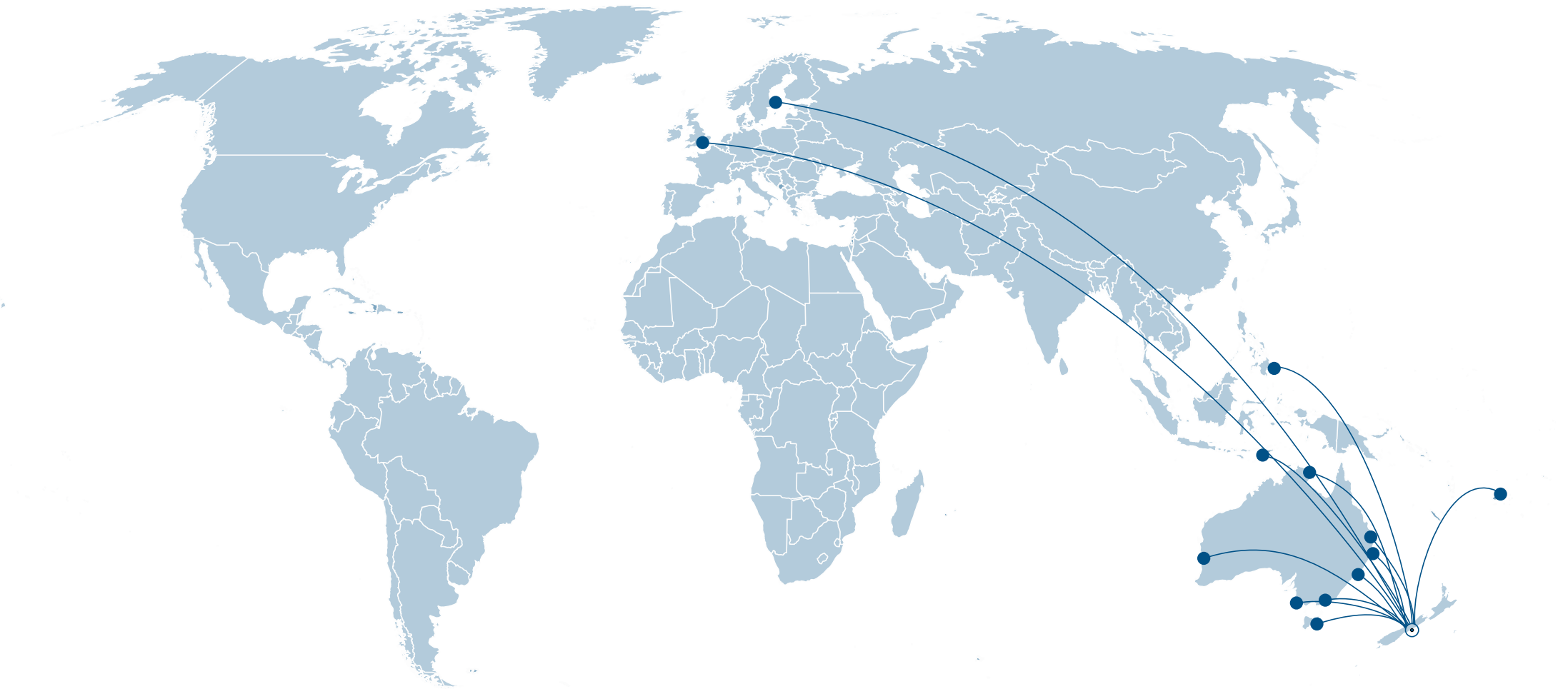
- Hull must be supported solely by longitudinal skids/bunks.
- Longitudinal skids must be positioned close beside the inner side of the reverse chines.
- Skid length must be capable of supporting at least 70% of the hull length.
- Skids must support past the stern by at least 50mm.
- Skids must have a contact surface being of plastic or carpet.
- Trailer must have an entry roller and bow roller or snub block.
- Keel rollers can be used but **must not** be load bearing.

Facts and Information

- Polyethylene LMDPE (Linear Medium Density Polyethylene).
- Oil Based by product.
- UV (Ultra Violet) stabilized, last outside for many years, no trouble.
- Compound Resin - same colour all the way through, Not dry blend, which is only the outer skin coloured.
- If applying antifoul products, please refer to the 3M specifications guide.
- High impact resistance.
- Can be welded up for repair.
- Scratches can be sanded and heat treated (with care).
- Red may lose colour slightly after a few years.
- Boats are fully tested and certified to many standards.
- All SmartWave boats have marine grade foam and have level flotation - positive buoyancy (except Skippa).
- Level flotation means if the boat is fully swamped it will still float above the water line, in the upright position.
- If boat(s) are overturned they will float above the water line.
- Foam used is polyurethane - marine grade. It is 95% non-absorbent. It will absorb water over time.
- When attaching fittings, always pre-drill with a pilot drill.
- All fastenings are of stainless steel 304 / 316.
- Use silicone for sealing - Selly's all clear general purpose, or any marine grade quality.
- Cleaning of boats, use a high pressure hose with any detergents and most solvents i.e turps, meths and petrol but never MEK solvent or acetone.



Exported Globally



NZ 0800 668 534 | AUS 1800 073 463 | www.smartwave.co.nz